



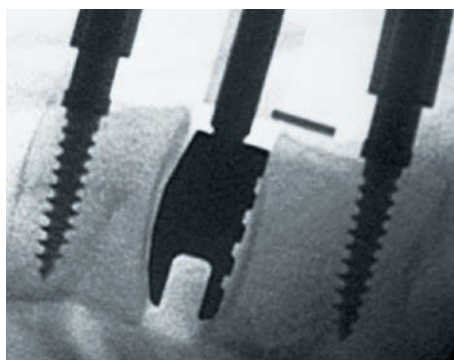
SPINE SURGERY

# AESCULAP® CCR-XX

RADIOLUCENT CERVICAL RETRACTOR SYSTEM  
FOR ENHANCED FLUOROSCOPIC IMAGING

# AESCULAP® CCR-XX SYSTEM

CASPAR® RADIOLUCENT CERVICAL RETRACTOR SYSTEM



The use of radiolucent CCR-XX blades provide enhanced fluoroscopic imaging of the vertebral bodies and the anatomical landmarks required for the positioning and placement of implants.

## EXTENSIVE BLADE RANGE

- 19 mm system for microsurgical techniques
- blade lengths from 30 mm up to 70 mm with either toothed or blunt ends

## SIDE-LOAD MECHANISM

- smart intra-operative handling
- blades can be used with handles as hand-held retractor
- compatible to previous ball snap closure
- compatible to standard stainless steel CCR



# AESCALAP® CCR-XX SYSTEM

CASPAR® RADIOLUCENT CERVICAL RETRACTOR SYSTEM



## DOUBLE HINGE RETRACTORS

- allows for intra-operative adaption
- basic retractor with tiltable butterfly screw

## PEEK BLADES WITH RIDGES GIVING GOOD PURCHASE AGAINST SOFT TISSUE

- enhanced radiolucent X-ray imaging
- less light reflection
- enhanced grip and fit
- new generation PEEK for enhanced stability

## PRODUCT INFORMATION

### BLADES

#### CCR-XX Radiolucent Toothed Blades

Art. No.	Description	length	width
BW251P	toothed blade, 19 mm	L = 30 mm	W = 19 mm
BW252P	toothed blade, 19 mm	L = 35 mm	W = 19 mm
BW253P	toothed blade, 19 mm	L = 40 mm	W = 19 mm
BW254P	toothed blade, 19 mm	L = 45 mm	W = 19 mm
BW255P	toothed blade, 19 mm	L = 50 mm	W = 19 mm
BW256P	toothed blade, 19 mm	L = 55 mm	W = 19 mm
BW257P	toothed blade, 19 mm	L = 60 mm	W = 19 mm
BW258P	toothed blade, 19 mm	L = 65 mm	W = 19 mm
BW259P	toothed blade, 19 mm	L = 70 mm	W = 19 mm



#### Radiolucent Blunt Blades

Art. No.	Description	length	width
BW261P	blunt blade, 19 mm	L = 30 mm	W = 19 mm
BW262P	blunt blade, 19 mm	L = 35 mm	W = 19 mm
BW263P	blunt blade, 19 mm	L = 40 mm	W = 19 mm
BW264P	blunt blade, 19 mm	L = 45 mm	W = 19 mm
BW265P	blunt blade, 19 mm	L = 50 mm	W = 19 mm
BW266P	blunt blade, 19 mm	L = 55 mm	W = 19 mm
BW267P	blunt blade, 19 mm	L = 60 mm	W = 19 mm
BW268P	blunt blade, 19 mm	L = 65 mm	W = 19 mm
BW269P	blunt blade, 19 mm	L = 70 mm	W = 19 mm



# AESCULAP® CCR-XX SYSTEM

## PRODUCT INFORMATION

### RETRACTORS

#### BW139R

CCR radiolucent basic retractor, preferably used for medial-lateral retraction, double hinge, tiltable butterfly screw, side load mechanism



#### BW137R

CCR radiolucent basic counter retractor, preferably used for longitudinal retraction, double hinge, side loading



#### BW138R

CCR radiolucent longitudinal counter retractor, preferably used for longitudinal retraction, with high loading, high torsion resistance



#### BW010R

Handle for blades for a modular use as hand-held retractors (as Langenbeck hand retractor)



#### BW011P

Depth gauge to determine the appropriate blade length



## COMPLETE SET VERSION

CCR Radiolucent CASPAR® Retractor

Art. No.	Description	length	no. per set
BW251P	toothed blade, 19 mm	L = 30 mm	2
BW252P	toothed blade, 19 mm	L = 35 mm	2
BW253P	toothed blade, 19 mm	L = 40 mm	2
BW254P	toothed blade, 19 mm	L = 45 mm	2
BW255P	toothed blade, 19 mm	L = 50 mm	2
BW256P	toothed blade, 19 mm	L = 55 mm	2
BW257P	toothed blade, 19 mm	L = 60 mm	2
BW258P	toothed blade, 19 mm	L = 65 mm	2
BW259P	toothed blade, 19 mm	L = 70 mm	2
BW261P	blunt blade, 19 mm	L = 30 mm	2
BW262P	blunt blade, 19 mm	L = 35 mm	2
BW263P	blunt blade, 19 mm	L = 40 mm	2
BW264P	blunt blade, 19 mm	L = 45 mm	2
BW265P	blunt blade, 19 mm	L = 50 mm	2
BW266P	blunt blade, 19 mm	L = 55 mm	2
BW267P	blunt blade, 19 mm	L = 60 mm	2
BW268P	blunt blade, 19 mm	L = 65 mm	2
BW269P	blunt blade, 19 mm	L = 70 mm	2
BW137R	CCR basic counter retractor		1
BW138R	CCR longitudinal counter retractor		1
BW139R	CCR basic retractor		1
BW010R	handle		2
BW011R	depth gauge		1
BW125P	tray with lid		1



# AESCLAP® CCR-XX SYSTEM

## PRODUCT INFORMATION

### MINIMAL SET VERSION

CCR Radiolucent CASPAR® Retractor

Art. No.	Description	length	no. per set
BW251P	toothed blade, 19 mm	L = 30 mm	2
BW252P	toothed blade, 19 mm	L = 35 mm	2
BW253P	toothed blade, 19 mm	L = 40 mm	2
BW254P	toothed blade, 19 mm	L = 45 mm	2
BW255P	toothed blade, 19 mm	L = 50 mm	2
BW256P	toothed blade, 19 mm	L = 55 mm	2
BW257P	toothed blade, 19 mm	L = 60 mm	2
BW258P	toothed blade, 19 mm	L = 65 mm	2
BW259P	toothed blade, 19 mm	L = 70 mm	2
BW139R	CCR basic retractor		1
BW125P	tray with lid		1
JK440	container	L = 90 mm	1
JP006P	container lid		1





## COMPLETE SET VERSION

CCR Radiolucent CASPAR® Retractor

Art. No.	Description	material type	length	no. per set
BW251P	toothed blade, 19 mm	radiolucent	L = 30 mm	2
BW252P	toothed blade, 19 mm	radiolucent	L = 35 mm	2
BW253P	toothed blade, 19 mm	radiolucent	L = 40 mm	2
BW254P	toothed blade, 19 mm	radiolucent	L = 45 mm	2
BW255P	toothed blade, 19 mm	radiolucent	L = 50 mm	2
BW256P	toothed blade, 19 mm	radiolucent	L = 55 mm	2
BW257P	toothed blade, 19 mm	radiolucent	L = 60 mm	2
BW258P	toothed blade, 19 mm	radiolucent	L = 65 mm	2
BW259P	toothed blade, 19 mm	radiolucent	L = 70 mm	2
BW261P	blunt blade, 19 mm	radiolucent	L = 30 mm	2
BW262P	blunt blade, 19 mm	radiolucent	L = 35 mm	2
BW263P	blunt blade, 19 mm	radiolucent	L = 40 mm	2
BW264P	blunt blade, 19 mm	radiolucent	L = 45 mm	2
BW265P	blunt blade, 19 mm	radiolucent	L = 50 mm	2
BW266P	blunt blade, 19 mm	radiolucent	L = 55 mm	2
BW267P	blunt blade, 19 mm	radiolucent	L = 60 mm	2
BW268P	blunt blade, 19 mm	radiolucent	L = 65 mm	2
BW269P	blunt blade, 19 mm	radiolucent	L = 70 mm	2
BW125P	tray with lid	standard		1
JK440	container	standard	L = 90 mm	1
JP006	container lid	standard		1



# CASPAR® DISTRACTOR

WITH LOCKING MECHANISM



## LOCKABLE CERVICAL DISTRACTOR

- smart intra-operative adaption
- distractor with tiltable butterfly screw
- sleeves with locking mechanism to interlock the distraction screws



FW848R



FW849R

- enhanced fixation to the vertebral bodies
- no slip-off of the sleeves from the screws
- allows for parallel distraction over the whole surgery

## PRODUCT OVERVIEW

### FF908R

twist drill



### FW850R

screw driver for lockable distraction screw



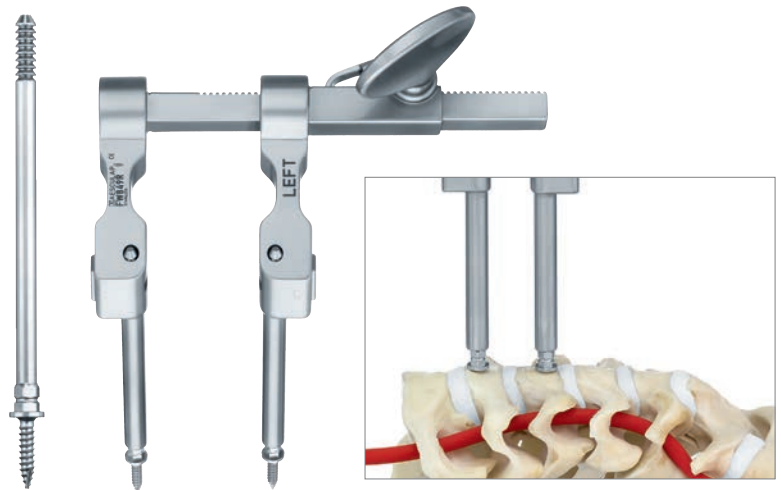
### lockable standard distraction screw

FW861SU = 12 mm

FW862SU = 14 mm

FW855SU = 16 mm

FW856SU = 18 mm



# AESFULAP<sup>®</sup> – a B. Braun brand

Aesculap AG | Am Aesculap-Platz | 78532 Tuttlingen | Germany  
Phone +49 7461 95-0 | Fax +49 7461 95-2600 | [www.aesculap.com](http://www.aesculap.com)

The main product trademark "AESFULAP" and the product trademark "CASPAR" are registered trademarks of Aesculap AG.

Subject to technical changes. All rights reserved. This brochure may only be used for the exclusive purpose of obtaining information about our products. Reproduction in any form partial or otherwise is not permitted.